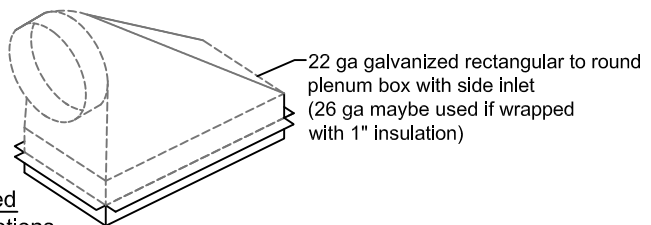
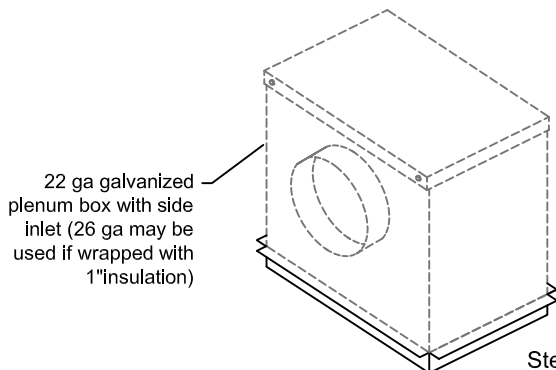
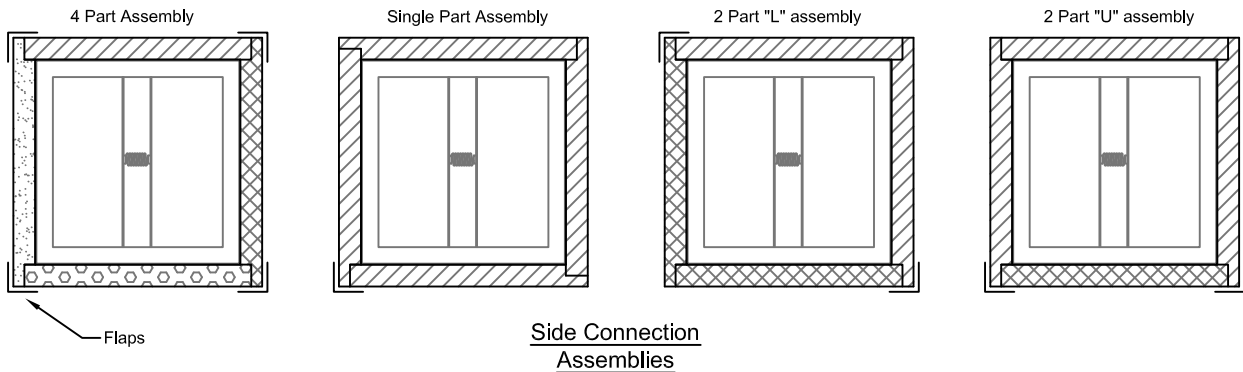
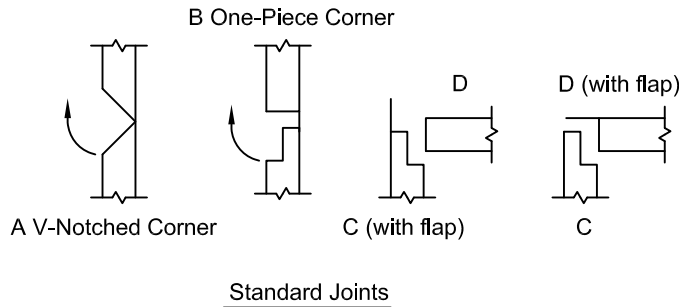
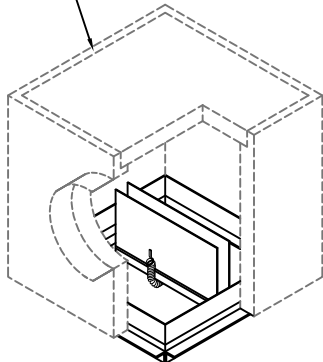


A field applied duct board plenum box is to be made of UL 181 fiberglass duct board 1-2" thick, and sealed with UL 181 aluminum tape, at least 2½" wide. The box must be installed around the C-S/R-WTP(S) damper sleeve without any gaps and the plenum must not interfere with the damper's ability to function. The duct hole must be on one of the sides and cannot exceed 76.12 square inches.

Qty. of 4 Minimum 18 ga galv. steel hanging tabs (1 per corner, field supplied) required if hanging wire or angle installation method is to be used.

Field supplied duct board plenum shown



**Field Supplied Steel Plenum Options**

Job Name:	<input type="checkbox"/> <b>MODEL C-SR-WTP(S) Field Supplied Plenum Options</b>		
Location:			
Architect:			
Engineer:	DRAWN BY: CLJ	DATE: 4-6-14	REV. DATE: 7-10-14
Contractor:	REV. NO. 1	APPROVED BY: MD	DWG. NO.: <b>P-93g</b>